

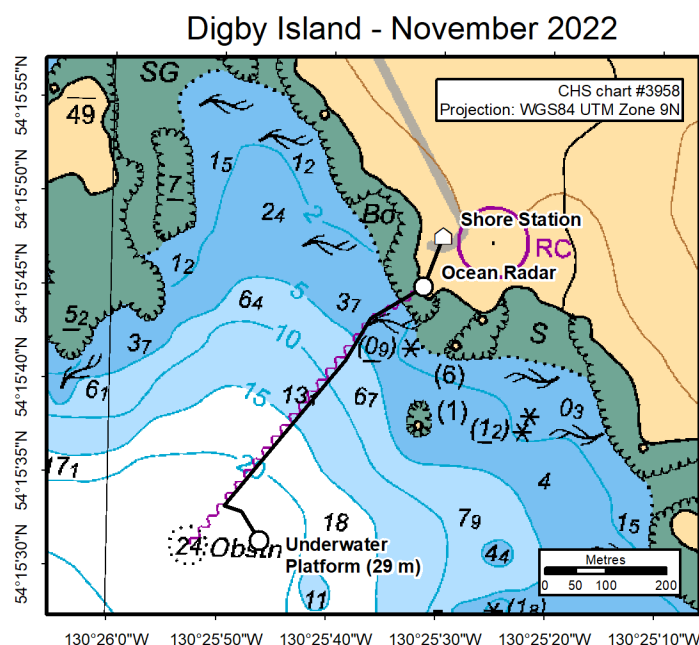
Information for Mariners – November 2022

Community Observatory Digby Island

Project: The Digby Island subsea platform, managed by Ocean Networks Canada (ONC) of the University of Victoria, contains a suite of instruments used for ocean observing. From the Shore Station, a marine cable extends to the shoreline, then along the ocean bottom out to the instrument platform. The data and images are sent back to the University of Victoria. Project status, system information, and data are available from the ONC website: <http://www.oceannetworks.ca>

What: Marine cables and observatory systems (see web site for system details).

When: Latest system and instrument deployments in Digby Island: **16 July 2022**



These figures have been produced by the University of Victoria based on Canadian Hydrographic Service (CHS) charts, pursuant to CHS DULA CHS # 2019-1004-1260-UV. The incorporation of data sourced from CHS in these products shall not be construed as constituting an endorsement by CHS of these products. These products do not meet the requirements of the Charts and Nautical Publications Regulations, 1995 under the Canada Shipping Act, 2001. Official charts and publications; corrected and up-to-date, must be used to meet the requirements of those regulations.

Installations:

Name	Latitude	Longitude	Depth (m)	Notices	Description
Instrument Platform	54.258737	-130.429468	29 m	NW-P-1617-22	1.5 m grey rectangular platform

Cable: A cable runs from a shore station located at 54.26332, -130.42495 to the shoreline, and then out to a point at 54.25925, -130.43037 from which it turns southeast to the instrument platform. The previous cable route and platform locations are shown on Chart 3958 and 3957.

Full cable routes and waypoints are available for use with Electronic Navigation Systems from the ONC website: <http://www.oceannetworks.ca/installations/notice-mariners>

Contacts: If you have any concerns, or would like further information, please contact either: Ian Kulin, Ocean Networks Canada's Director of Observatory Physical Operations at ikulin@uvic.ca or 250-721-6279, or ONC GIS Specialists at GIS@oceannetworks.ca.