

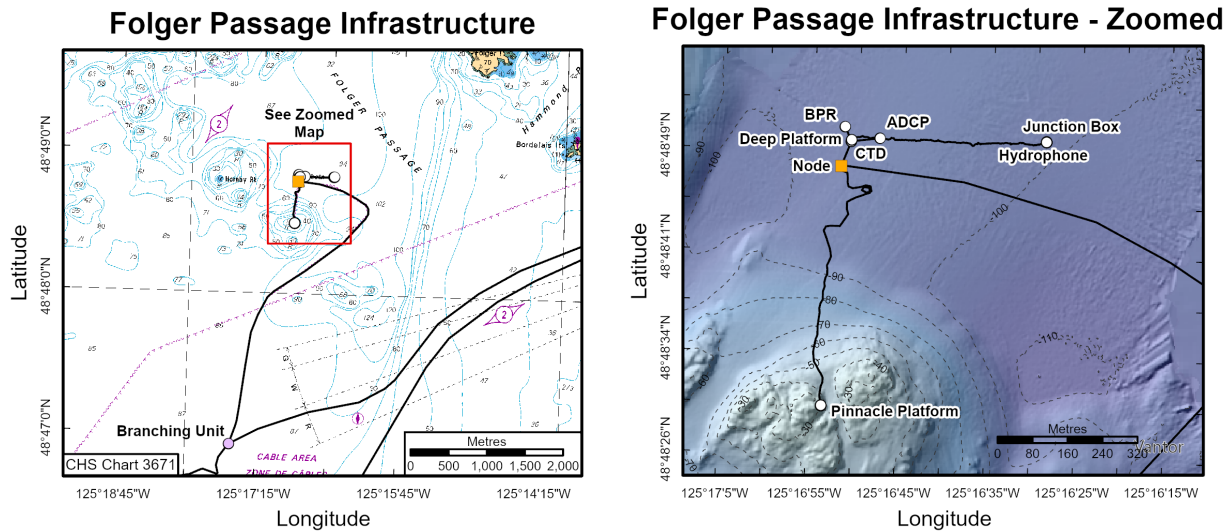
**Information for Mariners – April 2026**  
**NEPTUNE Observatory: Folger Passage**

**Project:** The North-East Pacific Undersea Networked Experiments (NEPTUNE) is an oceanographic project managed by Ocean Networks Canada (ONC), an initiative of the University of Victoria. It consists of a cabled observatory off the west coast of Vancouver Island, beginning in Port Alberni and extending 300 km offshore along an 813 km loop. From a shore landing, an armoured marine cable extends along the ocean bottom to large observatory “Nodes”, into which oceanographic instrument systems connect. High voltage power is supplied down the cable, and Ethernet communications along fibre optics bring data and images back to the University in real time. Project status, system information, and data are available from the Ocean Networks Canada website: [oceannetworks.ca](http://oceannetworks.ca)

**What:** High voltage marine fibre optic cables and observatory systems (see website for system details).

**When:** Latest system and instrument deployments in Folger Passage: **19 March 2026**

**Where:** **Folger Passage, West Coast Vancouver Island.** See **Chart # 3671** for obstructions and cables.



*These figures have been produced by the University of Victoria based on Canadian Hydrographic Service (CHS) charts, pursuant to CHS Direct User License No. 2024-0822-1260-ON. The incorporation of data sourced from CHS in these products shall not be construed as constituting an endorsement by CHS of these products. These products do not meet the requirements of the Charts and Nautical Publications Regulations, 1995 under the Canada Shipping Act, 2001. Official charts and publications; corrected and up-to-date, must be used to meet the requirements of those regulations.*

**Installations:**

Name	Latitude	Longitude	Depth (m)	Description
Branching Unit	48.78211	-125.29215	87	3 m cylindrical steel can
Instrument Platform (Pinnacle)	48.80829	-125.28150	25	Large (3 m) grey steel frame
Node	48.81322	-125.28108	100	Large 7 m yellow trawl resistant frame, 13 tons
Instrument Platform (Deep)	48.81373	-125.28079	94	Large (3 m) grey steel frame
CTD (Deep)	48.81376	-125.28078	96	3 m steel tripod
ADCP (Deep)	48.81381	-125.27990	94	1 m plastic orange grated platform
Mini Junction Box (Deep)	48.81384	-125.27470	95	1.5 x 0.5 m metal frame box on the seafloor
Hydrophone (Deep)	48.81382	-125.27471	96	Large (3 m) green and black steel tripod with four hydrophones attached.
BPR (Deep)	48.81403	-125.28099	95	Triangular grey steel frame (1 m)

Full cable routes and waypoints are available for use with Electronic Navigation Systems from the ONC website: <https://www.oceannetworks.ca/notice-for-mariners/>

**Contacts:** If you have any concerns or would like further information, please contact either Ben Biffard, Ocean Networks Canada's Director of Digital Operations, at [bbiffard@oceannetworks.ca](mailto:bbiffard@oceannetworks.ca), or ONC GIS Specialists at [GIS@oceannetworks.ca](mailto:GIS@oceannetworks.ca).